

C711 Series

OKI®



Breathtaking HD Color quality and cost-saving print controls for improved workgroup printing performance

C711n
C711dn
C711dtn



**OKI and
The Environment**

- Toner Save Mode** Reduces amount of consumables used
- Duplex (2-sided) Printing** Saves energy and resources
- Low Power Consumption** Takes less energy to operate





The C711 Series from OKI quickly delivers high-quality output on a wide range of media – including card stock and banners up to 52 inches in length.

Highlights:

- HD Color Printing technology for sharp detail and rich, dramatic color
- Three standard configurations: C711n – network ready; C711dn – network and duplex (2-sided) printing¹; and C711dtn – network, duplex and 530-sheet 2nd paper tray standard
- Fast print speeds: color output at up to 34 ppm; monochrome at 36 ppm²
- Time to first page as fast as 9 seconds color, 8 seconds monochrome²
- 1200 x 600 dpi resolution for crisp, clear output in color and black & white
- 630-sheet standard paper capacity, expandable to 1,690 sheets max with optional 2nd/3rd trays
- PCL[®] 6, PCL 5c and PostScript[®] 3™ emulations; support for Windows[®] Vista[®] XPS and PDF 1.7
- Network, USB and Parallel connectivity
- Color Access Policy Manager (CAPM) to help control printing costs
- Single Pass Color™ Digital technology for printing up to 140 lb. (250 gsm) index stock and banner-size sheets
- Eco-friendly features to support green initiatives
- 2-piece consumables for low Total Cost of Ownership in color and monochrome
- Optional security features including data encryption and password protection
- Windows XPS and PDF Direct Print
- 1-Year limited warranty with Overnight Exchange on printer³; 5-Year limited warranty on LED printheads
- Live, toll-free technical support 24/7/365³

For high-impact documents and improved workgroup performance—along with tighter control over your printing costs and security—look to the C711 Series.

They're perfect for your medium-to-large workgroup.

Fast printing for increased productivity – With print speeds of up to 34 ppm in color, 36 ppm in monochrome, and a time to first color page of 9 seconds,² C711 Series printers keep work flowing productively.

Unique HD (High Definition) Color technology – For print quality that visibly enhances your documents, C711 Series printers use HD Color printing technology.

This combines OKI's multilevel LED printheads, unique microfine toner, a straight-through paper path, and enhanced color software to provide greater depth of detail and color, and a high gloss finish, even on ordinary office paper.

Print a range of document sizes and formats with ease – Single Pass Color™ technology and the C711 Series' straight-through paper path will easily handle media up to 140 lb. index (or 250 gsm), as well as envelopes and banners. The 2-sided printing capability of duplex-equipped models saves time and supplies.

Print letter- and legal-size sheets for day-to-day requirements—in breathtaking color or crisp black & white. Should you need to print postcards, CD labels, even banners up to 52 inches in length, you can produce them all in-house.

Unmatched warranty support – We're so confident in the reliable performance of C711 Series printers that we provide an industry-leading 5-year warranty on their printheads, and a 1-year limited printer warranty with Overnight Exchange and optional coverage extensions.³

You can also speak to our live tech experts located in North America—24/7/365—by calling **800.OKI.DATA (800.654.3282)**.³

Control your color output, security and bottom line.

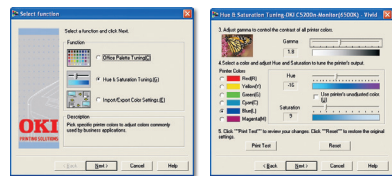
C711 Series color printers from OKI deliver brilliant output at high speeds. They also offer a long list of features that can improve your image, profitability and peace of mind. Here are some value-added examples:

CONTROL the quality of your output

Color Swatch Easily match custom colors to the color values on your C711 Series printer. Select a simple swatch to print a basic set of colors, then match the values in your application. Select a custom swatch and set the Hue, Saturation and Lightness to target your custom color.



Color Correct Makes it easy to adjust colors commonly found in applications such as Microsoft® Word, Excel® and PowerPoint®. It also lets you adjust the overall color of a print by controlling the lightness, darkness and contrast of images, and intensity and lightness of colors.



CONTROL your printing costs

Color Access Policy Manager (CAPM) Lets you control and monitor color usage by defining who can print and what gets printed. Decide who and what can print in color, in black & white or not at all, making color printing cost-effective. Access levels can be assigned by user name, PC/server name, application, file name and web sites. Once policies are configured, CAPM determines how—or if—incoming jobs will print. All policies are password-protected for added security.



HD Color Printing

Crisp, clear Black & White

No printout permitted

Job Accounting Enables tracking of color and mono printing costs, easy monitoring of printing activity, and greater control of printer usage. It generates reports for administrative, bill-back or cost-accounting purposes. User permissions can be assigned and are stored on the printer—not on the network—so the system is totally secure.

CONTROL the degree of your security

C711 Series printers equipped with the 16 GB SD memory card provide enhanced security features that include Encrypted Secure Print:

- **256-Bit Encryption** Enables secure passage of sensitive documents from PC to printer, with processing and output requiring PIN identification.
- **Job Timeout** If not retrieved within a certain time (pre-set by the user), the document is sanitized (cleared) from the unit's memory.
- **MAC Validation** The Message Authentication Code (MAC) is PC-encrypted into a document's printing data to prevent the file from being tampered with after it is sent to the printer. The printer reads the code and, if any alterations to the file are detected, issues a warning and cancels the job.

Breathtaking HD Color quality and cost-saving print controls for improved workgroup printing performance. Expect more from the C711 Series from OKI.

THE C711 SERIES AT A GLANCE

LCD screen display with gauge to show toner status

34 ppm color and 36 ppm mono print speed¹

100-sheet multi-purpose tray

Single Pass Color™ technology delivers high speed and reliability

Print on sheets up to 250 gsm, banners up to 8.5" x 52"

530-sheet main paper tray

530-sheet 2nd paper tray (standard on C711dtn)



High Definition (HD) Color printing technology

Duplexer for 2-sided printing (optional on C711n model)

11,500-page color (CMY) and 11,000-page Black toner cartridges⁴

256 MB standard memory, 768 MB max.

100,000 pages-per-month duty cycle

530-sheet optional 3rd paper tray (for 1,690-sheet max. paper capacity)

¹ Optional on C710n.

² Published performance results based on laboratory testing. Individual results may vary.

³ Available in the U.S. and Canada only.

⁴ Based on ISO 19798. Printers ship with 4,000-page "starter" toner cartridges.

C711 Series

Specifications

Performance

- **Print Speed:** Up to 34 ppm Color; up to 36 ppm Monochrome¹
- **Time to First Page:** As fast as 9 sec. Color; 8 sec. Monochrome¹
- **Processor:** 533 MHz
- **HD Color Printing Technology:** Combines multilevel LED printheads and microfine toner for sharp detail and rich color depth
- **Print Resolution:** 1200 x 600 dpi
- **Duty Cycle:** Up to 100,000 pg./mo.
- **Duplex (2-Sided) Printing:** Standard on C711dn and C711dtn; optional on C711n

Productivity Solutions

- **Web-based Printer Management:** PrintSuperVision and OkiLAN[®] Embedded Web Server
- **PDF Direct Print v1.7:** Receives and prints .pdf files through version 1.7 without opening an application, enhancing productivity (Windows[®] environment only)
- **Windows[®] Vista[®] XPS:** Support for embedded XML Paper Specification (XPS)

Security Solutions

- **Encrypted Secure Printing:** PIN/password-enabled; AES 256-bit encryption; Message Authentication Code (MAC)
- **Network Security:** IP address filtering, MAC address filtering, SNMP v3, SSL/TLS, IPP over SSL/TLS, E-mail authentication, Protocol lockouts

Cost Containment Solutions

- **Job Accounting Software:** Track color/monochrome pages by individual or department (SD memory card required for optimal functionality)
- **Color Access Policy Manager:** Allows control over color printing access, and converts unauthorized color print jobs to black & white

Color Management

- **Utilities:** Color Matching software and Color Correct from OKI

Compatibility

- **Emulations:** PCL[®] 6, PCL 5c; PostScript[®] 3[™]; IBM[®] PowerPrinter[®]; Epson[®] FX; Windows Vista XPS; PDF Direct Print v1.7
- **Operating Systems:** Standalone and network – Windows 7, Vista/Vista x64, XP Home/XP Professional/XP x64, Server 2008 R2 x64, Server 2003/2003 x64, Server 2000; Mac[®] support – OS X 10.3 and higher
- **Network Protocols:** TCP/IP, NetBEUI, NetWare[®], EtherTalk

Connectivity

- **Network Interface:** 10 Base-T/100 Base-TX Internal Ethernet Print Server
- **Local Ports:** USB v2.0, Parallel

Memory

- **Standard:** 256 MB
- **Maximum:** 768 MB
- **Memory Storage:** 16 GB SD Memory Card

Resident Typefaces

- **Scalable:** 86 MonoType, 80 PostScript fonts, 1 OKI original OCR font
- **Bitmap Fonts:** OCR-A/B; LinePrinter
- **Bar Codes:** USPS, UPC-A/E, Code 39/128, EAN/JAN-8, EAN/JAN-13, EAN/UCC-128, Interleaved 2 of 5, CodaBar, PDF417, ZIP+4 PostNet[®]

Paper Handling

- **Paper Input:** C711n/C711dn – 630 sheets standard (530-sheet Legal/Letter/Universal Main Tray + 100-sheet Multi-Purpose Tray); C711dtn – 1,160 sheets standard (with 530-sheet 2nd Tray). All models 1,690 sheets max. (with standard/optional 530-sheet 2nd and 3rd Paper Trays)
- **Multi-Purpose Tray:** Standard 100-sheet; handles overhead transparencies, envelopes, mailing label stock, and banners
- **Paper Sizes (Min./Max.):** Main Tray, standard/optional 2nd Tray and optional 3rd Tray – 5.8" x 8.3" to 8.5" x 14"; Multi-Purpose Tray – 3" x 5" to 8.5" x 52" banner; Duplex – 5.8" x 8.3" to 8.5" x 14"
- **Paper Weight:** Main/2nd/3rd Tray 17 lb. bond – 120 lb. index (64 – 220 gsm); Multi-Purpose Tray 17 lb. bond – 140 lb. index (64 – 250 gsm); duplex 17 lb. – 120 lb. index (64 – 220 gsm)

Environmental

- **Size (WxDxH):** 17.1" x 21.5" x 15.3" (43.5 cm x 54.7 cm x 38.9 cm)
- **Weight:** Approx. 60.8 lb. (27.6 kg)
- **Power Consumption:** Idle 100W, Typical 600W, Peak 1300W, Power Save <1.2W (approx. 1.0W)
- **Acoustics:** Operating ≤54 dB(A); Standby ≤37 dB(A)

Supplies

- **Toner Cartridges and Image Drums:** Separate Black, Cyan, Magenta and Yellow
- **Toner Cartridge Life:** 11,500 pages Cyan, Magenta and Yellow; 11,000 pages Black²
- **Image Drum Life:** Approximately 20,000 pages³

Warranty

- **Printer:** 1-Year Overnight Exchange limited warranty⁴
- **Digital LED Printheads:** 5-Year limited warranty

¹ Published performance results based on laboratory testing. Individual results may vary.

² Based on ISO 19798. Printers ship with 4,000-page "starter" toner cartridges.

³ Estimated life, based on 3 pages per job.

⁴ Available in the U.S. and Canada only.

⁵ Achieves ENERGY STAR[®] energy savings; product fully qualifies when packaged with (or used with) a duplex tray.

Ordering Information

Description	Part Numbers	
C711n 120V (Multilingual)	62433501	
C711n 230V (Multilingual)	62433502	
C711dn 120V (Multilingual) ⁵	62433503	
C711dn 230V (Multilingual) ⁵	62433504	
C711dtn 120V (Multilingual) ⁵	62433505	
C711dtn 230V (Multilingual) ⁵	62433506	
Options		
Duplex (2-Sided Printing) Unit	70061601	
530-sheet 2nd & 3rd Paper Trays	44274501	
Memory Expansion:		
256 MB DIMM	70061801	
512 MB DIMM	70061901	
16 GB SD Memory Card	70061701	
Supplies		
Toner Cartridges:		
Cyan Toner Cartridge	11,500 pg. ²	44318603
Magenta Toner Cartridge	11,500 pg. ²	44318602
Yellow Toner Cartridge	11,500 pg. ²	44318601
Black Toner Cartridge	11,000 pg. ²	44318604
Image Drum Kits:		
Cyan Image Drum Kit	20,000 pg. ³	44318503
Magenta Image Drum Kit	20,000 pg. ³	44318502
Yellow Image Drum Kit	20,000 pg. ³	44318501
Black Image Drum Kit	20,000 pg. ³	44318504
OKIcare[®] Overnight Exchange Warranties⁴		
	U.S.	Canada
C711 Srs. 2-Yr Warranty	38003302	38003312
C711 Srs. 3-Yr Warranty	38003303	38003313
OKIcare[®] On-Site Warranties⁴		
	U.S.	Canada
C711 Srs. On-Site Upgrade	38003601	38003611
C711 Srs. 2-Yr On-Site Wty.	38003602	38003612
C711 Srs. 3-Yr On-Site Wty.	38003603	38003613
Print Media		
Sheets Per Box		
Bright White Proofing Sheets (32 lb.):		
8.5" x 11"	500	52206101
Premium Color Transparency Film	50	52205701
Premium Card Stock (8.5" x 11"):		
60 lb. Cover	250	52205601
90 lb. Index	250	52205602
110 lb. Index	250	52205603
SynFlex [™] Paper (Waterproof and Tear-resistant):		
8.5" x 11"	100	52205901
Premium Envelopes (size #10):		
	100	52206301
	500	52206302
Banner Paper (8.5" x 35.4")	100	52206002

For more information on Digital Color Printers and supplies from OKI, including OKIcare[®] Extended Service Programs: **1.800.OKI.DATA** (800.654.3282).⁴

OKI DATA AMERICAS, INC.

USA
2000 BISHOPS GATE BLVD.
MOUNT LAUREL, NJ 08054-4620
TEL: 800.OKI.DATA (800.654.3282)
FAX: 856.222.5320

CANADA
4140B SLADEVIEW CRESCENT
UNITS 7 & 8
MISSISSAUGA, ONTARIO L5L 6A1
TEL: 905.608.5000
FAX: 905.608.5040

LATIN AMERICA
2000 BISHOPS GATE BLVD.
MOUNT LAUREL, NJ 08054-4620
TEL: 55.5263.8780 (MEXICO)
FAX: 55.5250.3501 (MEXICO)

OKI DATA DE MÉXICO, S.A. DE C.V.
MARIANO ESCOBEDO, 748 8^º PISO
C.O. NUEVA ANZURES C.P. 11590
MÉXICO, D.F.
TEL: 55.5263.8780
FAX: 55.5250.3501

OKI DATA DO BRASIL INFORMÁTICA LTDA.
AV. ALFREDO EGÍDIO DE SOUZA ARANHA, 100
BLOCO C – 4^º ANDAR
04726-170 – SÃO PAULO – SP – BRASIL
TEL: 11.3444.3500
FAX: 11.3444.3502

WWW.OKIDATA.COM

Specifications are subject to change without notice.

Featured products may not be available in all countries. Please contact your local office for regional availability.

© 2013 Oki Data Americas, Inc. OKI Reg. T.M., M.D. M.R., OKIcare, Reg. T.M., Oki Electric Industry Co., Ltd. High Definition Color logo T.M., Single Pass Color T.M. and design Reg. T.M., Oki Data Corp. SynFlex, Overnight Exchange logo T.M., Oki Data Americas, Inc. PCL Reg. T.M., Hewlett Packard Co. Microsoft, Windows, Vista, PowerPoint, Excel Reg. T.M., Microsoft Corp. PostScript Reg. T.M., PostScript 3 T.M., Adobe Systems, Inc. Mac Reg. T.M., Apple Inc. USB-IF logo T.M., Universal Serial Bus Implementers Forum, Inc.

Printed in the USA

MS15993-1213



OKI[®]

Open up your dreams